

BLZ Dental



Digitize your dentistry with us

INO 100+

The Digital Journey Starts Now



INO100+

Accuracy

High accuracy is the basis of the digital dentistry workflow.

< 20
µm

Speed

INO100+ Provides you the smooth scanning experience.

< 40
sec

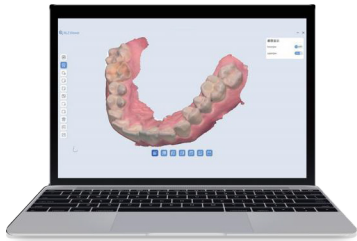


Safety

Gesture control - reduce the risk of cross infection while improving Scan workflow efficiency

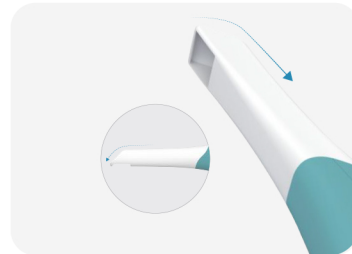
Instant heating

No need to wait for the scanning head heating time, plug and play

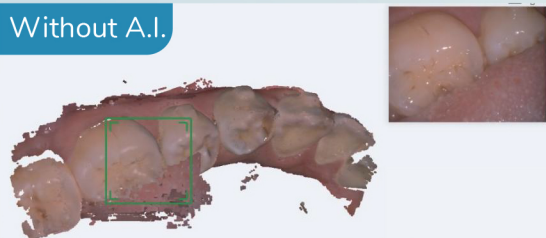


Comfort

Round scan head design, entrance height 1.7cm, give patients an excellent scanning experience



Without A.I.



With A.I.



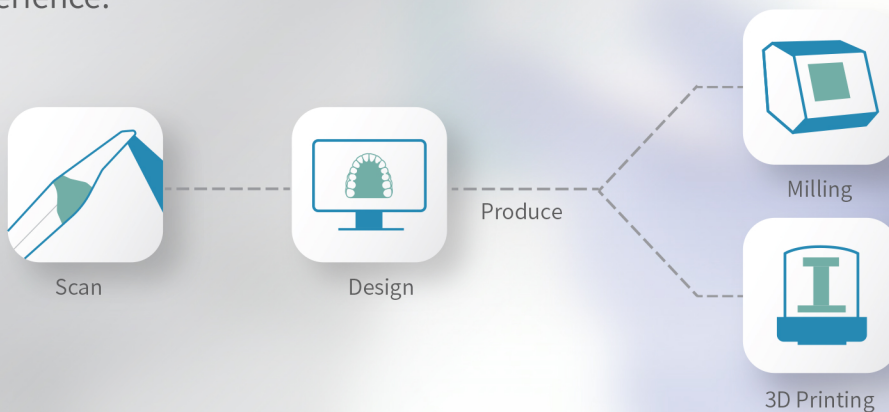
A.I.

A.I. Scan

A.I. scanning will Automatically filter out unnecessary data, like tongue and lips during scanning, which can keep the scanning process smooth.

Digital Dentistry Workflow

Start with a more efficient and simple workflow, and a better experience.



INO100+ Specification

Minimum Computer Configuration

Product Name	Intraoral Scanner
Output Format	STL, PLY, OBJ
Interface	USB 3.0
Accuracy	20µm
Power supply	DC12V 2A
Scan Depth	23mm
Weight	270g
Size	264mm*37mm*46mm
Tip Size	20mm*17mm
Wireless Scan	No
Cable Wireless Charge	No
Motion Control	YES
Light Source	LED
A.I. Tech	YES

Operating System	Windows 10 (64-bit)
CPU	Intel Core i5 8 Gen or above
Memory	16GB
Hard Disc	512G
GPU	NVIDIA GTX 1060 6GB DDR3
Resolution	1920X1080, 60Hz
USB Port	USB 3.0

BLZ Dental

BLZ Technology (Wuhan) Co., Ltd.

PHONE: 90005017

MOBILE: 09017514280

INSTAGRAM: @Lotusmedco

WEBSITE: Lotusmedco.com
blz-dental.com

