



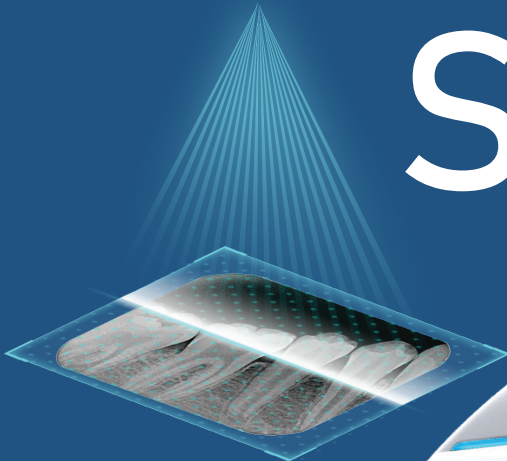
DentaFrum

Innovative Technology of Image Integration



SMART

Digital Dental Image Plate Scanner



Innovative Technology of
Image Integration

SP-dot Matrix U-ACE

Initiate smart interaction
Free communication



Standby



Reading

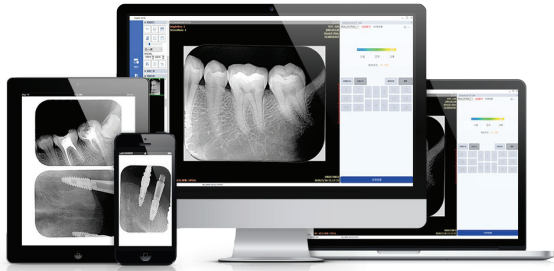


Finish

U-ACE Imaging Technology

After optimizing ACE algorithm, we get the U-ACE version. Combining with SP-dot Matrix technology, we are able to get exquisite and clear images.

Display on Multiple Devices

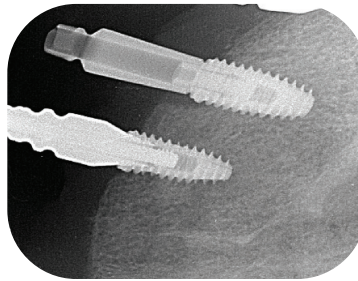


Smart interaction, easy work

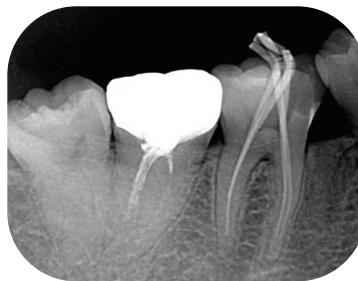
- The status of the scanner, standby finish, is showed by different color of light, smart and direct way to know what the scanner is doing.



Image Samples



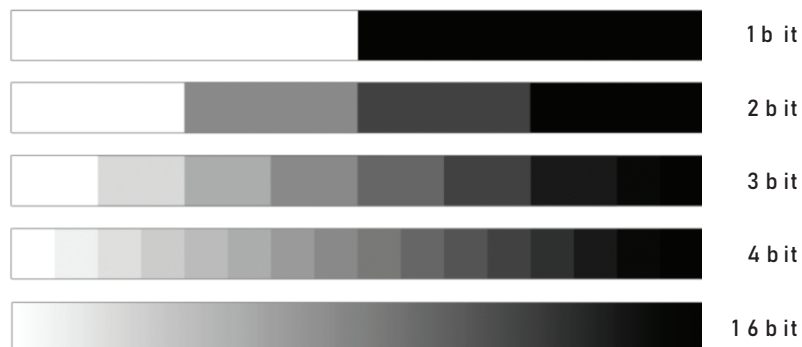
> > >



Super Clear Dental Image

Greyscale indicates the lightness level of image. It is the value of black and white or lightness at each pixel. From black to white, there are many grayscale values. The more the grayscale values, the more vivid and clear the image.

> > >



DREAMS NEVER FADE

1

Phone Number : 90005017

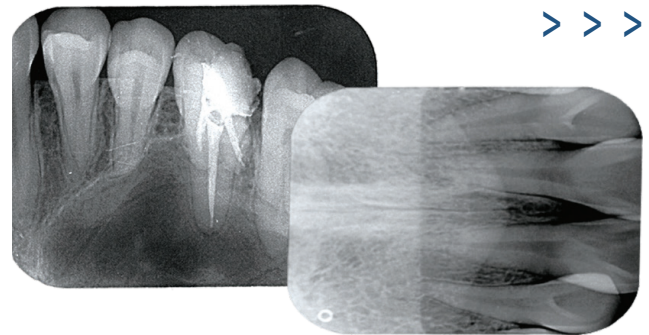
Web Address : Lotusmedco.com
Instagram : @Lotusmedco

WhatsApp : 09017514280
Telegram : 09962549159

Ultimate image, every small lesion can be easily seen.

- Thanks to high resolution and high grayscale value image, every small lesion can be shown in detail.

- The digital image has 16bit grey scale and 14lp/mm resolution. With the help of image processing algorithm, the final image is clear and readable. No further adjustment needed.



As thin as 0.1mm, guaranteed comfort for patient when scanning.

- Thin and soft plate can fit patient's teeth better. The image is clearer and has less distortion.
- The phosphorescent plate can be used for more than 1000 times. A storage box is available to protect the phosphorescent plate well.
- The phosphorescent plate has 4 sizes, 0# (22x31 mm), 1# (24x40mm), 2# (31 x41 mm), 3# (27 x54mm). They can be used to all patients.



Technical Parameters

Plate size supported	0#, 1 #, 2 #, 3 #
Pixel size	35um
Imaging plate erase	auto
Power supply	AC 220V 50Hz (changeable)
Operating system	Microsoft Windows 7 or above
Image output format	DICOM, BMP and JPG

Smart Phosphorescent Plate Processing System

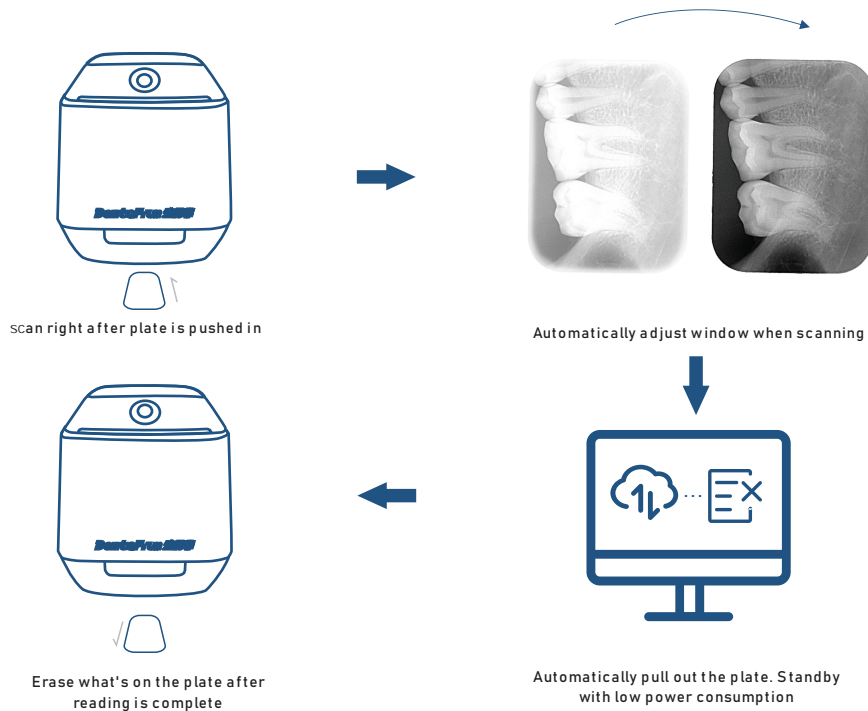


Smart scan: automatically start scanning and reading after the plate is pushed in. When finished, the plate is pulled out.

Image optimization: automatically adjust the size and position of window to get best image display.

Smart erase: when finished reading, the system will automatically erase the image on plate. Convenient to use again.

Saving power: in standby mode, the scanner will switch to power saving mode.



Relative Advantages



Compared to digital sensor	Compared to traditional film
Imaging plate is thin and soft. Each to be placed	No need for dark room. More convenient
100% effective imaging area. More details in image	No harmful chemicals. Safe and eco-friendly
Different plate sizes for all needs	Exposure of image adjustable on software
No cables, better in patient's mouth	Digital image, instant use
Running cost is lower. Economic	Digital diagnosis and storage